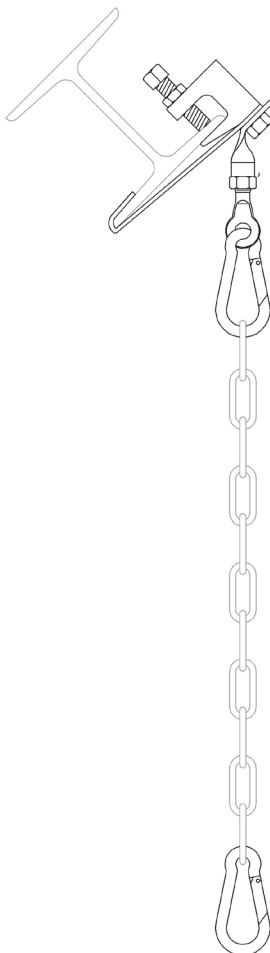


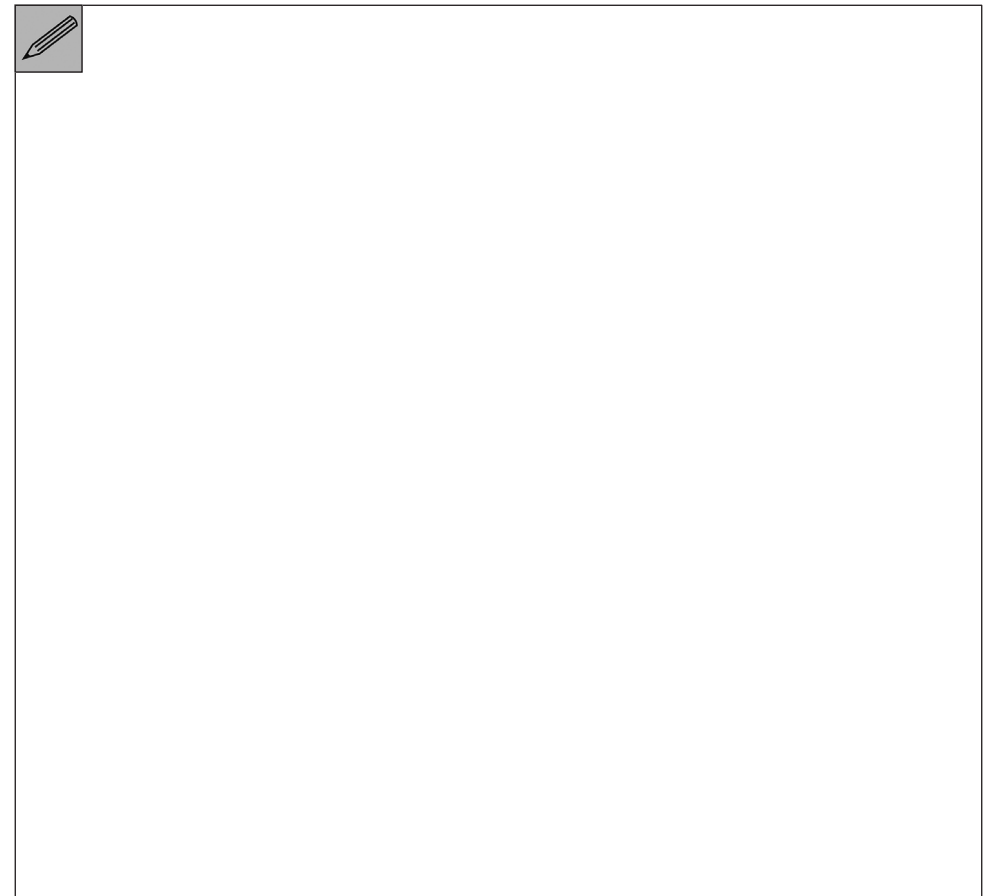
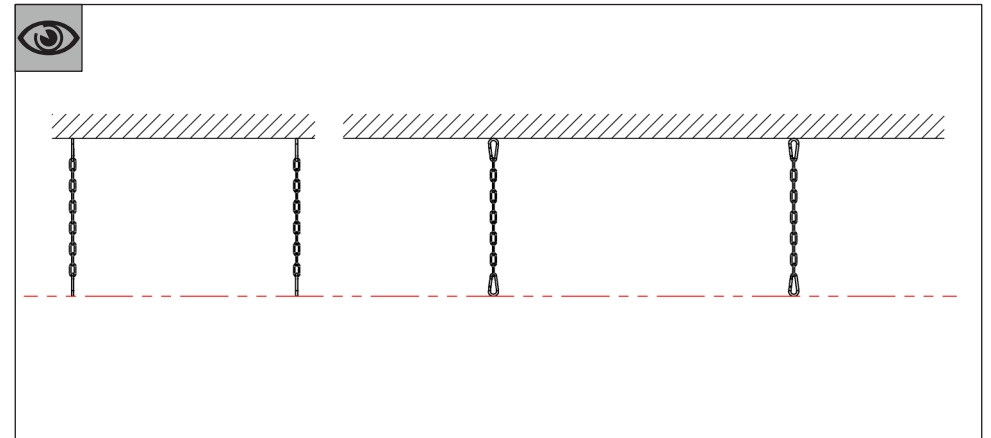
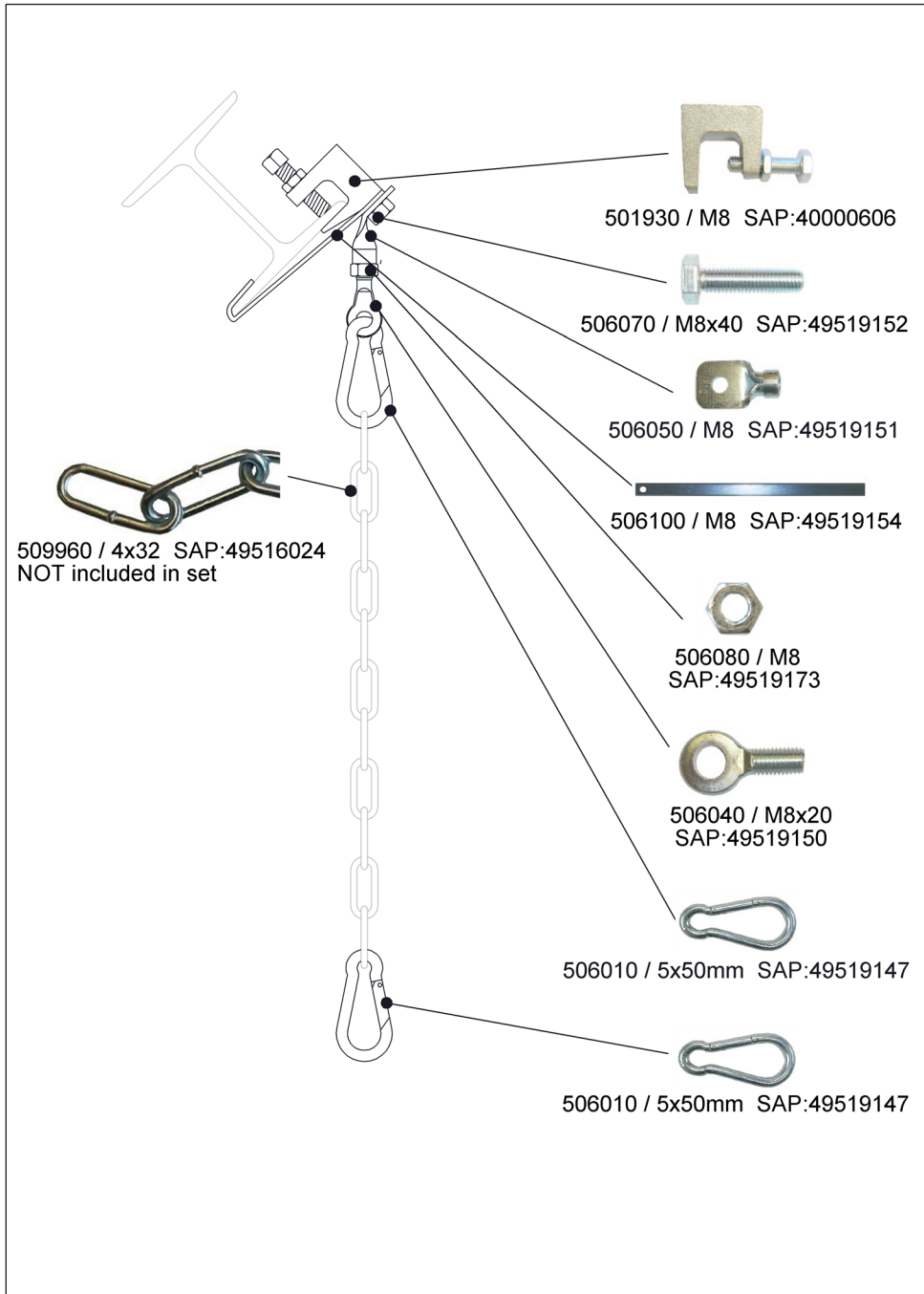
# Zehnder ZIP/CCE

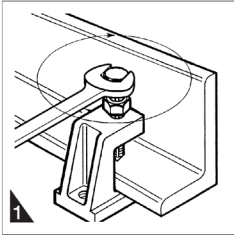
MAC-ZIP-SET-KN57-NOCHAIN-2XSNAPHOOK-01  
505240

**zehnder**

always  
around you







**Montage**

1. Trägerklammer ansetzen, Spannschraube handfest anziehen (Kontermutter falls nötig zurückdrehen). Spannschraube festziehen: 1 bis max. 1½ Umdr.

2. Kontermutter festziehen.

**Installation**

1. Position Beam Clamp. Hand-tighten clamping bolt (if necessary, unscrew the locking nut a bit). Tighten clamping bolt down with a spanner: 1 up to 1½ revolutions.

2. Tighten locking nut using a spanner.

**Nennlast**

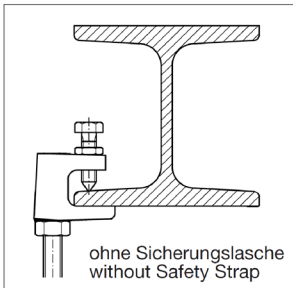
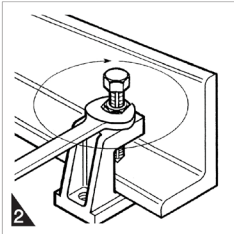
Gruppe TCS 1: 5,0 kN

Diese Nennlasten gelten nur für neue TCS am unbeschädigten Trägerflansch.

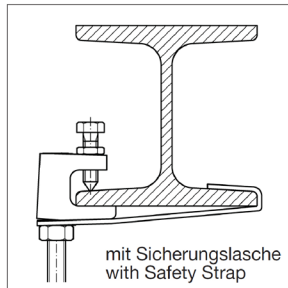
**Max. working load (tension)**

Group TCS 1: 5.0 kN

The nominal loads indicated apply to new Beam Clamps fixed to undamaged beam flanges only.

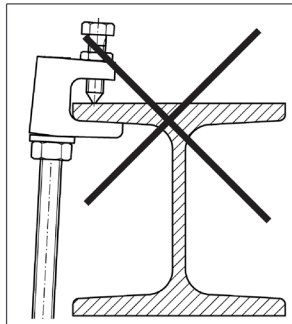
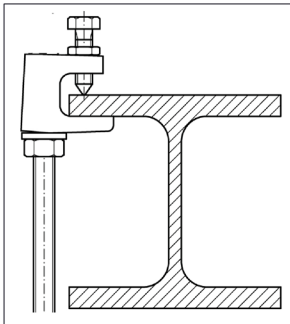


ohne Sicherungslasche  
without Safety Strap



mit Sicherungslasche  
with Safety Strap

**Montagebeispiele  
Mounting Examples**



**Achtung!**

- ▶ Anordnung nur bei Parallelfanschträgern erlaubt.

**Caution!**

- ▶ This arrangement is permissible for parallel-flange beams only.