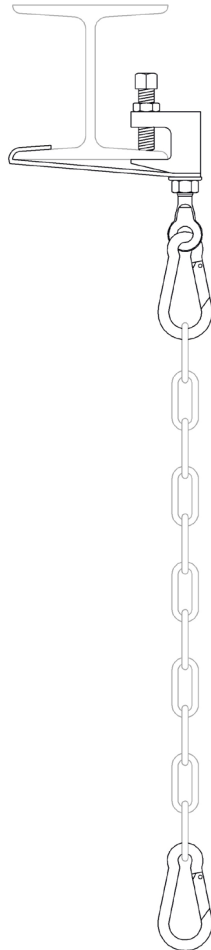


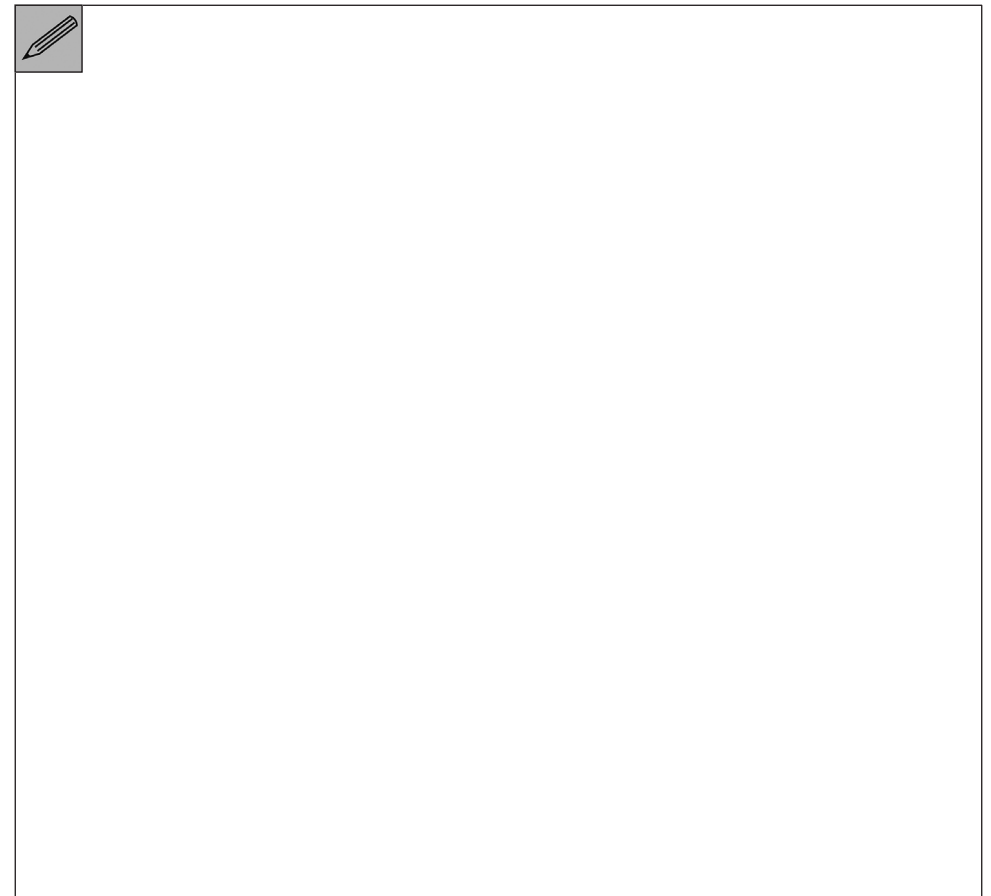
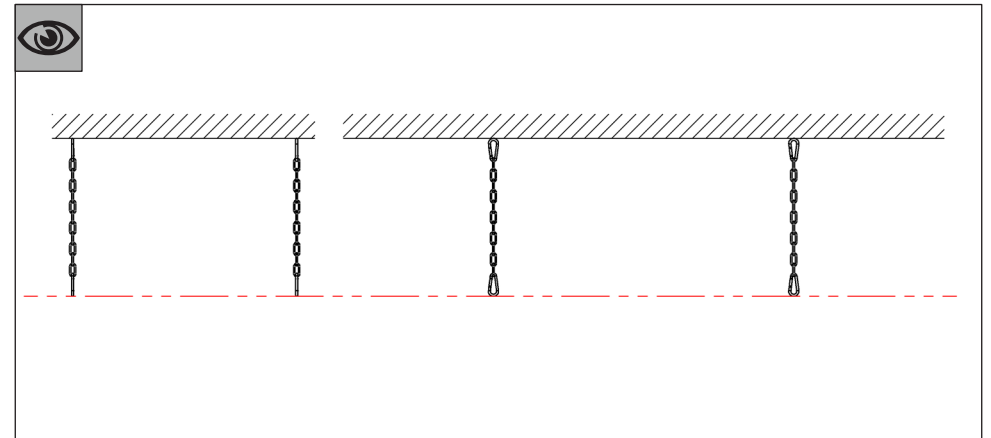
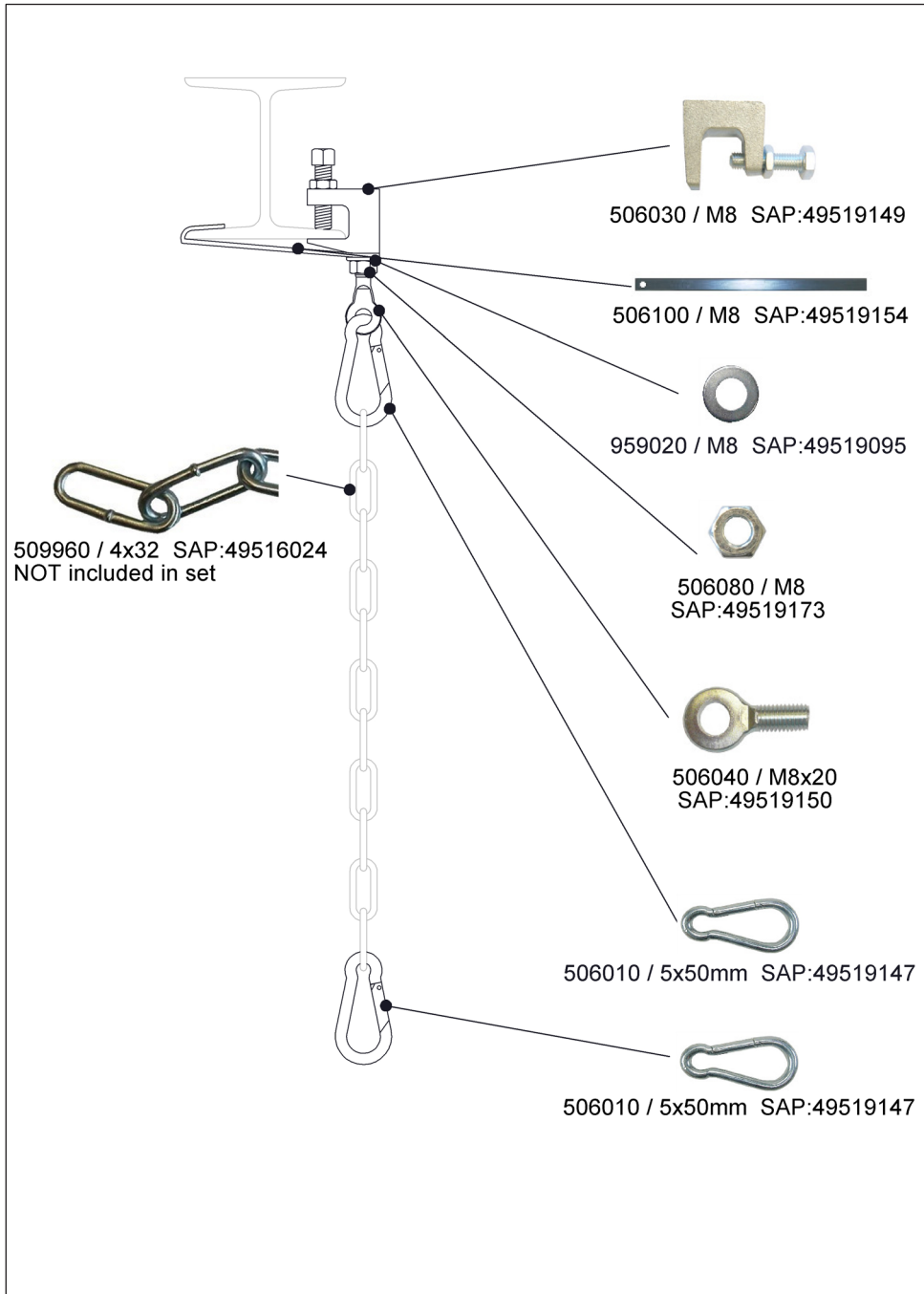
# Zehnder ZIP/CCE

MAC-ZIP-SET-KN58-NOCHAIN-2XSNAPHOOK-02  
505230

**zehnder**

always  
around you





# Montageanleitung / Installation Instruction Instruction de montage / Instrucciones de Colocación



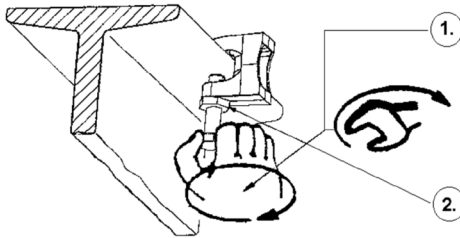
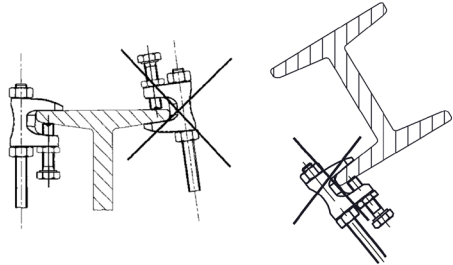
Trägerklammer  
Beam Clamp  
Crampon  
Mordaza

Korrekte Installation  
an Trägern mit  
schrägen Schenkeln

Correct installation  
to sections with  
tapered flanges

Installation correcte  
sur une poutre  
à côté oblique

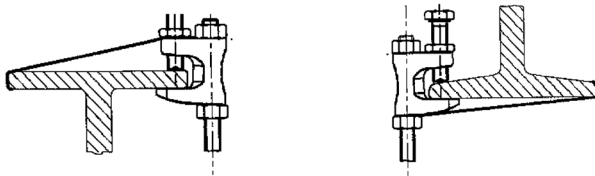
Montaje correcto  
de la mordaza



Andrehen von Hand +  
1/2 Schlüsselumdrehung  
tighten by hand +  
1/2 turn with spanner  
Serrer avec la main +  
1/2 tour avec la clef  
Fijar a mano +  
1/2 vuelta con la llave fija

Andrehen von Hand +  
1/8 Schlüsselumdrehung  
tighten by hand +  
1/8 turn with spanner  
Serrer avec la main +  
1/8 tour avec la clef  
Fijar a mano +  
1/8 vuelta con la llave fija

## Sicherungslasche / Safety strap / Fer plat de sécurité / Correas de seguridad



Trägerklammern können grundsätzlich mit einer Sicherungslasche gesichert werden. Die Vorschriften der zuständigen Behörden sind zu beachten.

Beam Clamps can generally be secured by safety straps. The instructions of the certifying bodies have to be followed.

Il est possible d'assurer les crampons avec un fer plat de sécurité. Suivez les instructions des autorités compétentes.

Las Mordazas para vigas normalmente pueden ser aseguradas con correas de seguridad. Se deben seguir las instrucciones de los certificados correspondientes.

Официальный дистрибьютор:



☎ 8 (800) 500 23 96 Россия (бесплатно)

☎ +7 (499) 110 97 53 Москва и МО

☎ +7 (812) 407 39 79 Санкт-Петербург

✉ info@esv.company

🌐 www.enervent-russia.ru

🌐 www.esv.company